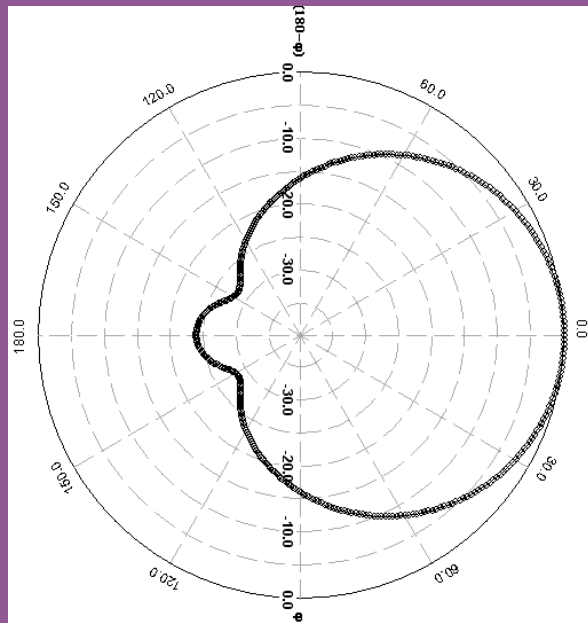




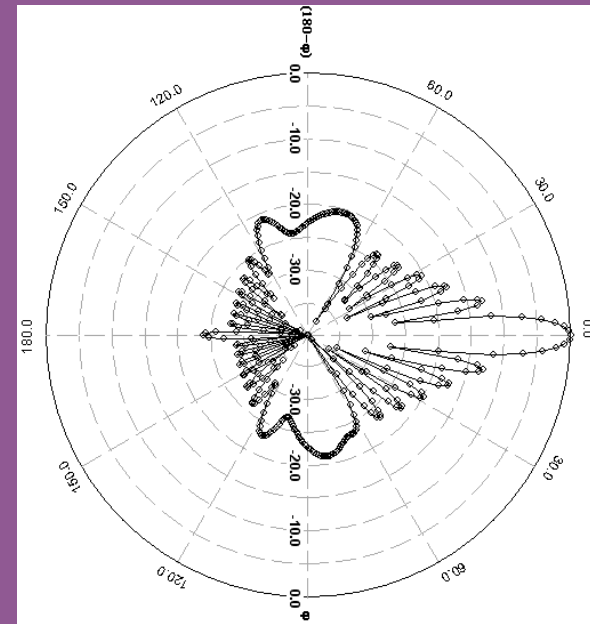
ELECTROMAGNETIC RADIATION RESEARCH FOUNDATION OF SOUTH AFRICA

Radiation Pattern of Antenna

Horizontal Plane



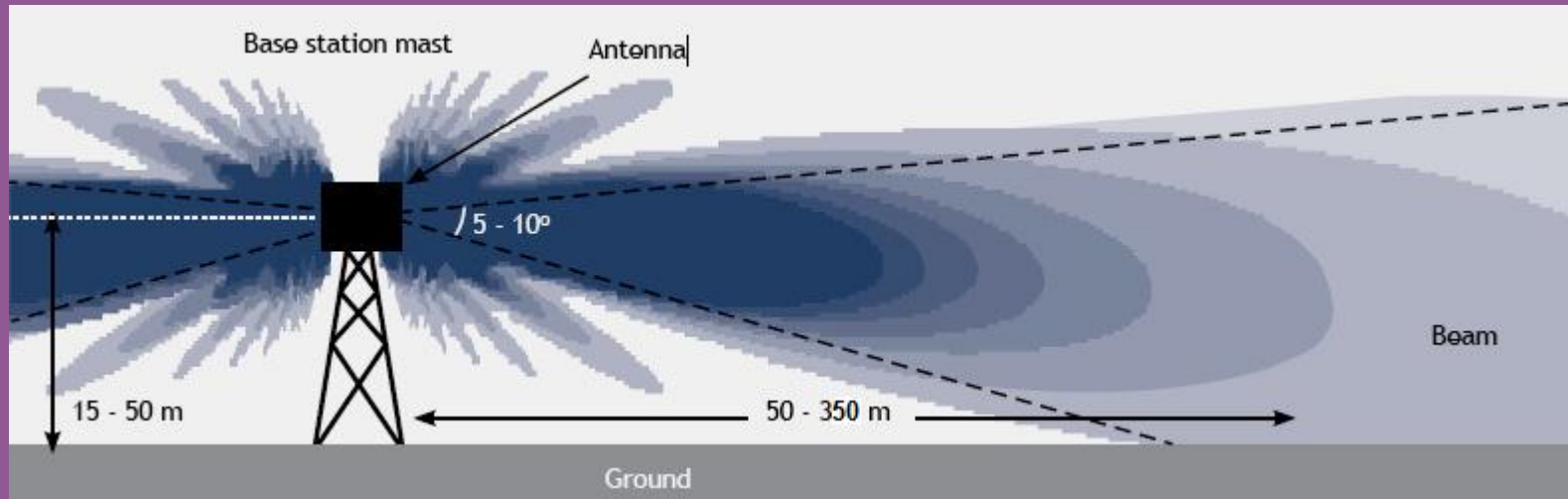
Vertical Plane





ELECTROMAGNETIC RADIATION RESEARCH FOUNDATION OF SOUTH AFRICA

Radiation Pattern of a Cell Tower Antenna



Propagation of "main beam" from antenna mounted on a tower or roof top

People living within 50 to 350 meter radius are in the high radiation zone (dark blue) and are more prone to ill-effects of electromagnetic radiation. (This may extend further depending on what is placed on the tower & the levels being transmitted) Effects have been recorded up to several kilometres away from masts.