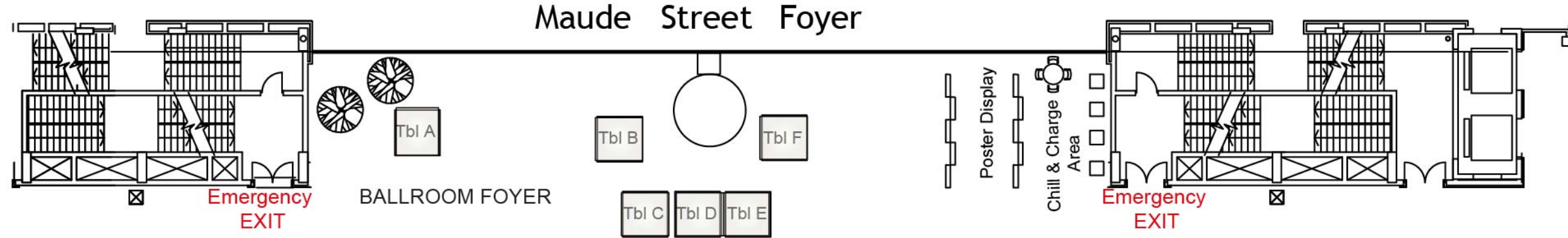
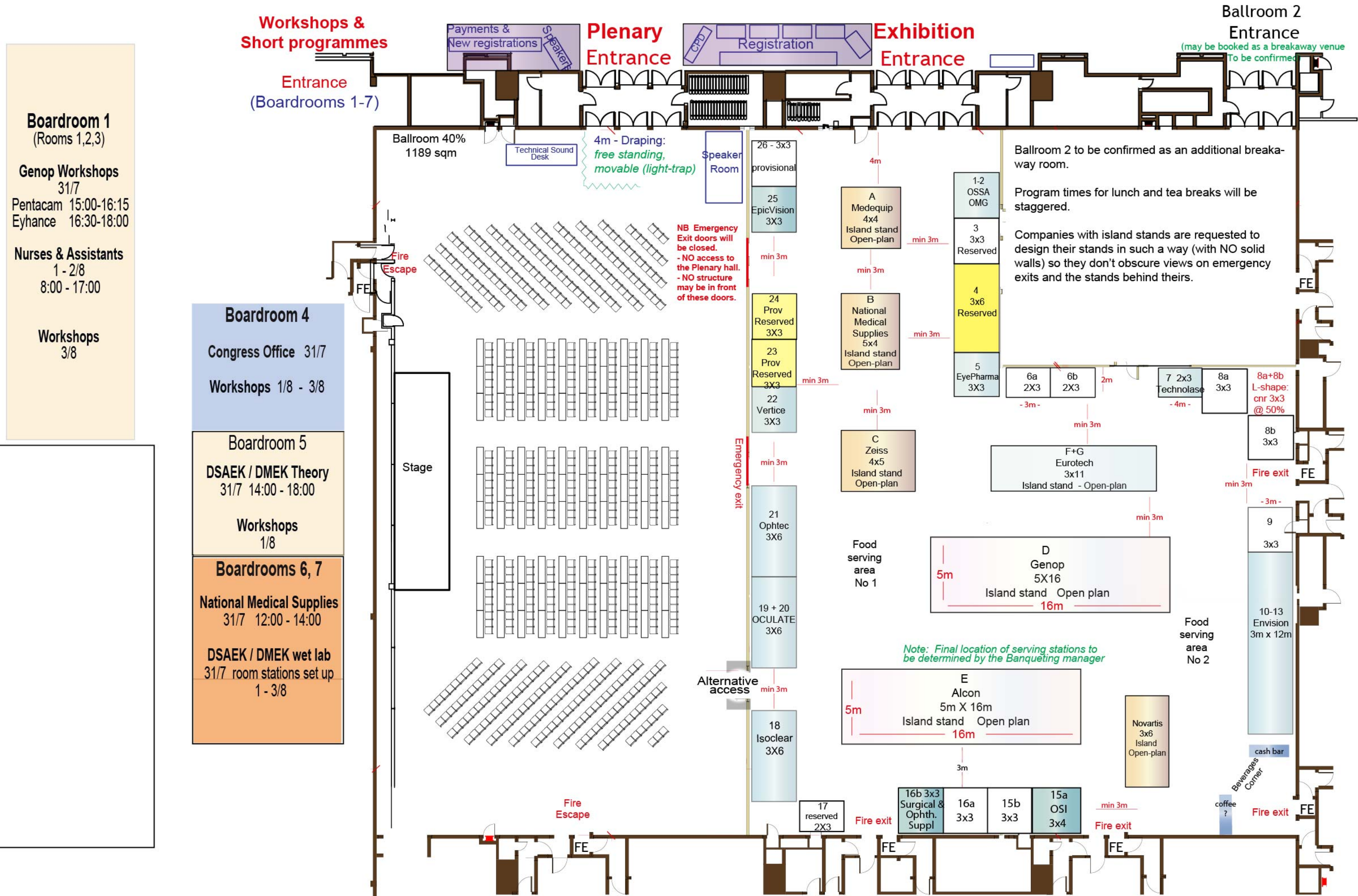


Maude Street Foyer



SASCRS 2019 Preliminary layout (semi final1)



Boardroom 1
(Rooms 1,2,3)

Genop Workshops
31/7
Pentacam 15:00-16:15
Eyhance 16:30-18:00

Nurses & Assistants
1 - 2/8
8:00 - 17:00

Workshops
3/8

Boardroom 4
Congress Office 31/7
Workshops 1/8 - 3/8

Boardroom 5
DSAEK / DMEK Theory
31/7 14:00 - 18:00
Workshops 1/8

Boardrooms 6, 7
National Medical Supplies
31/7 12:00 - 14:00
DSAEK / DMEK wet lab
31/7 room stations set up
1 - 3/8

Ballroom 2 to be confirmed as an additional breakaway room.

Program times for lunch and tea breaks will be staggered.

Companies with island stands are requested to design their stands in such a way (with NO solid walls) so they don't obscure views on emergency exits and the stands behind theirs.

Note: Final location of serving stations to be determined by the Banqueting manager

NB Emergency Exit doors will be closed.
- NO access to the Plenary hall.
- NO structure may be in front of these doors.